



Activating and Using the
OCR Converter Module

Information in this document is subject to change without notice. Companies, names, and data used in examples herein are fictitious unless otherwise noted.

©2002 Captaris, Inc. All rights reserved. No part of this publication may be reproduced, transmitted, transcribed, stored in a retrieval system, or translated into any language in any form by any means without the written permission of Captaris, Inc.

Portions copyright ©1999 Ligature. All rights reserved. Portions copyright ©1988, 1996 Aladdin Enterprises. All rights reserved. Portions copyright ©1993 Soft Horizons. All rights reserved. Outside In® Viewer Technology copyright ©1992-2002 Inso Corporation. All rights reserved. Copyright © TMS, Inc. 1994-2002. All rights reserved. Portions copyright ©2001 artofcode LLC. Portions Copyright © 1996, 2001 Artifex Software Inc. Portions Copyright ©1998 Soft Horizons. All Rights Reserved. Adobe, Acrobat, and the Acrobat logo are trademarks of Adobe Systems Incorporated. Includes Adobe® PDF Library technology. All rights reserved. PostScript is a trademark of Adobe Systems Incorporated. This software is based in part on the work of the Independent JPEG Group.

AGFA  **IntellFont**

Captaris and RightFax are trademarks of Captaris, Inc. All other company names, brand names, and product names are the property and/or trademarks of their respective companies.

Part number: 2005-25005-00 Rev 01

Activating and Using the OCR Converter Module

The RightFax OCR Converter™ module uses optical character recognition (OCR) technology to convert received faxes from a graphic format into text. A copy of the text file is saved with the fax image. This lets fax recipients edit and work with the content of their faxes. Fax client applications can be set to automatically convert all received faxes into text, or users may choose to convert selected faxes only.

Optical character recognition with the OCR Converter can be performed only on faxes that contain printed text. OCR technology does not work with most handwritten text.

Activating the OCR Converter Module on the RightFax Server

The files required by the OCR Converter module are installed on all RightFax servers during the server installation. However, the OCR Converter module must be licensed and activated before OCR conversion will be enabled. To use the OCR Conversion module, no installation on individual client computers is required.

The RightFax OCR Converter module is automatically activated on all RightFax Enterprise and Integration servers. For these server types, no additional steps are required.

To activate the OCR Converter module on other types of RightFax servers, you must have purchased and licensed the RightFax OCR Converter module. For information on activating new components on the RightFax server, refer to the *RightFax Installation Guide*.

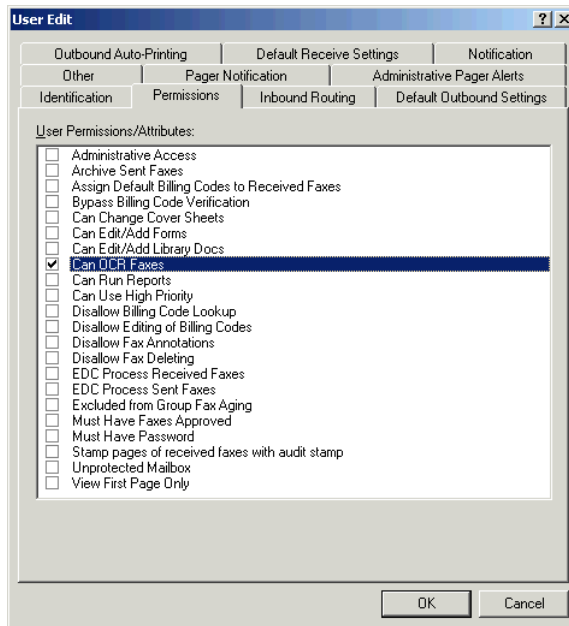
Configuring RightFax Users for OCR Conversion

After the RightFax OCR Converter software is enabled, you must grant each RightFax user permission to perform optical character recognition on received faxes. Because OCR conversion is very processor-intensive on the RightFax WorkServers responsible for OCR conversion (described in the *RightFax Administrator's Guide*), you may choose to restrict OCR rights to a limited number of users.

Granting OCR permission to RightFax users

To give a RightFax user permission to use optical character recognition features, run Enterprise Fax Manager, and double-click the user to open the **User Edit** dialog box. Click the **Permissions** tab and select **Can OCR Faxes**.

Figure 0.1 Enabling OCR for RightFax Users



Configuring users for automatic OCR conversion of all received faxes

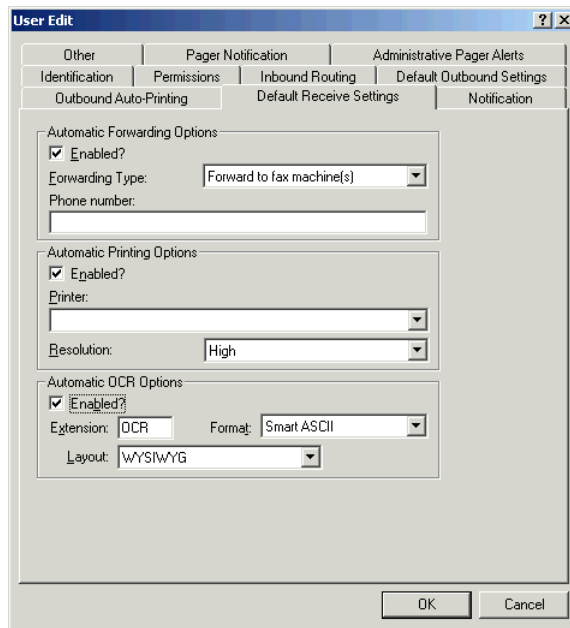
To configure a user for automatic OCR conversion of all received faxes, run Enterprise Fax Manager, and double-click the user to open the **User Edit** dialog box. Click the **Default Receive Settings** tab.

Under **Automatic OCR Options**, select the **Enabled** check box to automatically convert all received faxes using OCR. Enter a three-letter file extension for the output file in the **Extension** box.

In the **Format** box, select the text format used to interpret your fax pages. "ASCII" produces a plain text file. "Smart ASCII" approximates the original format. "RTF" (rich text format) preserves fonts and formatting but is only available to Windows users.

In the **Layout** box, select how you want the text to be formatted on the page. "WYSIWYG" will try to read the fax in the layout it sees. If, for instance, RightFax sees that the fax has three columns, it will try to read the document in column style. "Left Justified" displays the text starting from the left margin of the fax.

Figure 0.2 Configuring Users for Automatic OCR Conversion



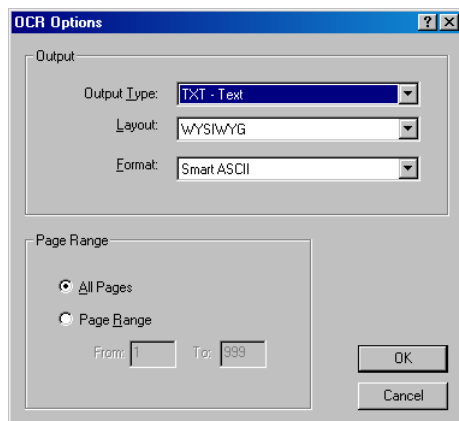
Using OCR Options in FaxUtil

FaxUtil includes several OCR functions that can be performed by individual fax users who have OCR permission enabled. Other supported fax client applications, such as e-mail gateways, may also support OCR functionality. For information on using OCR features with other fax client applications, refer to the documentation for the client application.

Converting individual faxes in FaxUtil

RightFax users who have been granted permission to OCR received faxes can convert individual faxes as needed from their FaxUtil mailboxes. To convert a received fax in FaxUtil, click the fax to convert and select **OCR** from the **Fax** menu. This opens the **OCR Options** dialog box.

Figure 0.3 The OCR Options Dialog Box



Output Type. Click the file extension to use when creating the text file.

Layout. Click the format for the text on the page. “WYSIWYG” will try to read the fax in the layout it sees. If, for example, RightFax sees that the fax has three columns, it will try to read the document in column style. “Left Justified” displays the text starting from the left margin of the fax.

Format. Click the text format used to interpret your fax pages. “ASCII” produces a plain text file. “Smart ASCII” approximates the original format. “RTF” (rich text format) preserves fonts and formatting.

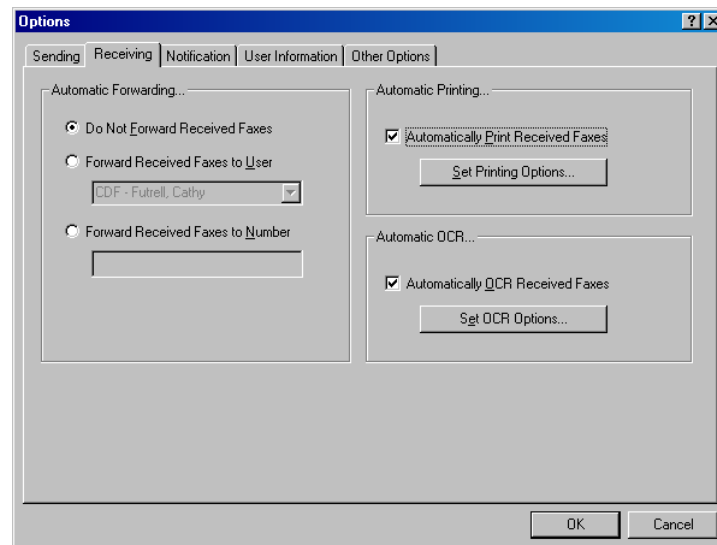
Page Range. Convert the entire file, or specify the specific page range to convert. Specifying a page range is especially useful if you want to convert only a small part of a very large fax.

Select the conversion options you want and click **OK** to convert the fax. The conversion process time depends on the length of the fax you are converting and the workload on the WorkServer performing the conversion. When conversion is complete, the FaxUtil mailbox will indicate that the converted fax now has a text file associated with it (see “Opening OCR Text Files” on page 7).

Enabling conversion of all received faxes in FaxUtil

RightFax users who have been granted permission to OCR faxes can configure their FaxUtil mailboxes to automatically OCR all received faxes. In FaxUtil, select **Options** from the **Tools** menu, and then click the **Receiving** tab.

Figure 0.4 The Receiving Tab



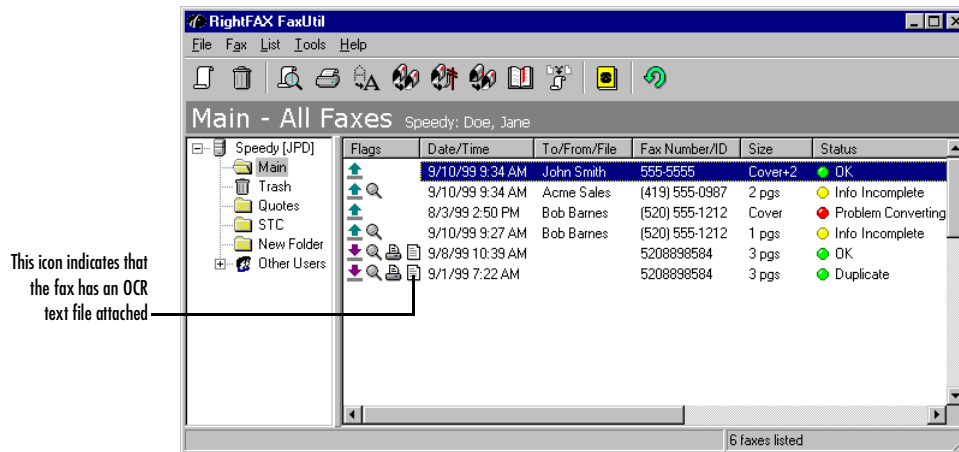
Select the **Automatically OCR Received Faxes** check box, and then click **Set OCR Options**. This opens the **Automatic OCR Options** dialog box (see “Converting individual faxes in FaxUtil” on page 5).

Opening OCR Text Files

How you receive OCR-converted faxes depends on which fax client application you use. If you use an e-mail gateway application as your fax client (such as Microsoft® Exchange or Lotus® Notes®), OCR-converted faxes will arrive as file attachments to e-mail messages along with the associated fax image file. These text file attachments can be viewed and edited exactly like any other e-mail attachment.

If you use FaxUtil as your fax client, OCR-converted faxes are stored in the RightFax database along with their associated fax image files. If a fax has an associated OCR text file, a special OCR icon will appear next to the fax entry.

Figure 0.5 The OCR Icon in FaxUtil



When you view the fax, a message will appear asking whether you want to view the fax image or the OCR text file. If you select the text file, the application associated with the OCR text file's extension will start and display the text.

■ ■ ■

