



DATASHEET

MailStore for Exchange 3.0

Captures and Archives Email from a Microsoft Exchange Server into a Secure and Compliant Repository

FEATURES AT A GLANCE

Do you need to meet legal and government requirements for email record keeping?

MailStore for Exchange (MFE) provides a 24x7, tamper-proof process for capturing and preserving email in a secure archive, making it easy to comply with regulations and the demands of the legal discovery process.

Do you need to monitor email corporate policy compliance?

MFE lets you search email traffic including the contents of attachments and find noncompliant messages within seconds.

Do you want an affordable solution that works and doesn't take forever to implement?

MFE is built on the stable, mature Captaris Alchemy content management system. It's up and running in hours not days or weeks.

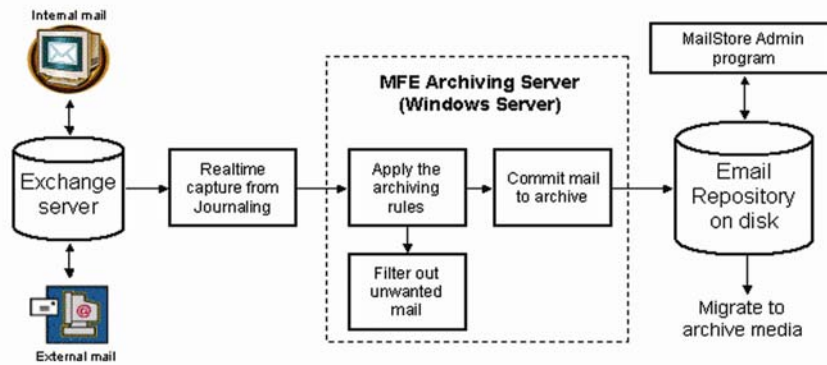
"We chose MailStore because it enabled us to quickly meet the strict guidelines outlined in the new SEC regulations. Other solutions were too expensive and required high-priced 'extras' to work effectively." —IT Manager, R.W. Smith Brokers

MailStore for Exchange can be purchased as a complete and stand-alone email archiving solution, or added to a Captaris Alchemy Server fixed content management system.

Imagine having your organization's emails and attachments in a single, secure repository. So you, or anyone you allow, can search, retrieve and view it. And manage its lifecycle. With MailStore for Exchange, you can.

Fast. Deployment is extremely fast—often in less than two hours—and without any third-party software integration or professional services. And best of all—no software is installed on your Exchange server.

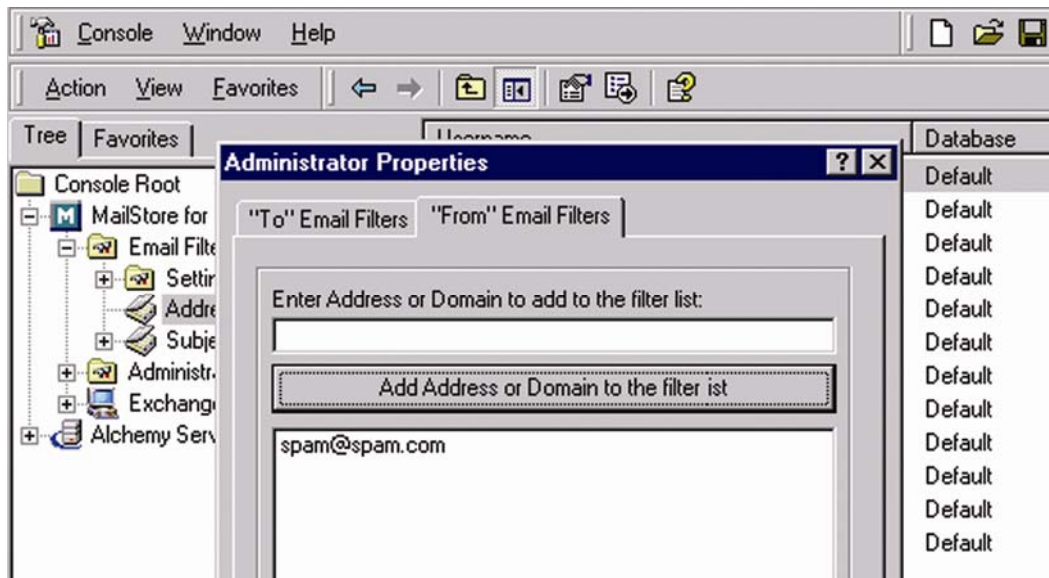
'zero-impact' archiving architecture



Compliant. MFE utilizes a rules-based policy engine to control which email is archived, making it easy to meet regulatory guidelines for email record keeping. Rules can be set globally or for individual mailboxes and policies can be based on an email address or domain, a sender, a recipient and even the content of message subject lines. When a MFE installation is part of a Captaris Alchemy Advanced Server system, audit trails are kept. And with the Records Manager option, file plans and retention schedules can be applied.

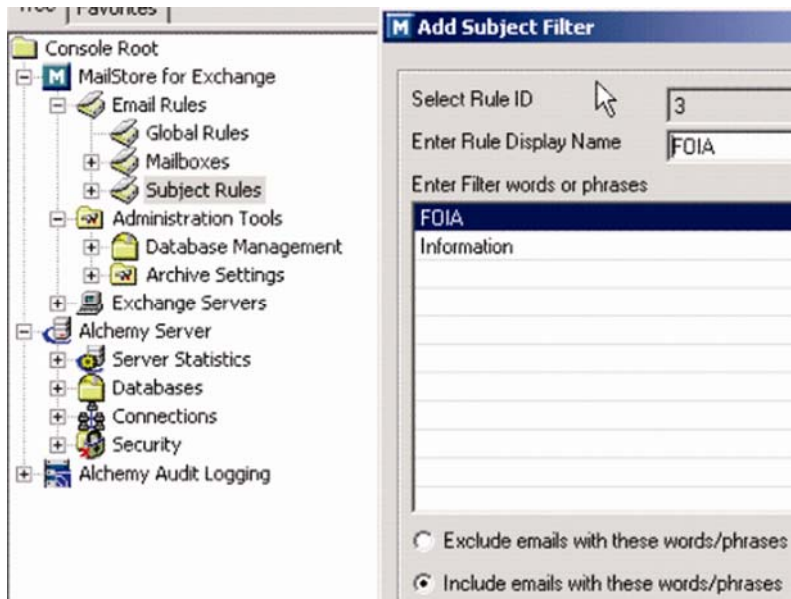
Flexible. Built on the Captaris Alchemy server and inheriting its storage neutrality, MFE can store email archives on hard disk, NAS, CD, DVD, UDO, ProData, optical libraries or wherever. (Third-party storage software may be required for some configurations.) You can even create stand-alone optical discs with selected emails to satisfy the demands of auditors or lawyers.

Searchable. All messages and text attachments are indexed by full-text contents and email header data (Sender, Recipient, Subject Line and Date Sent). Use the MailStore Administrator module (included with MFE) to search across mailbox archives and instantly view message content and attachments - all the software for viewing is included. For end-users to retrieve their own mailbox archives, add Captaris Alchemy Search for Windows or Captaris Alchemy Web.



Archive or exclude emails by address or domain

You can even direct emails into separate archives based on the address.



Include or exclude emails based on Subject Line content

You can even direct emails into separate archives based on text within the subject line.

MORE FEATURES OF MAILSTORE FOR EXCHANGE

- A real-time email archiving system. Search and retrieve emails by metadata fields within minutes of their being sent.
- Set archiving policies based on message metadata content analysis, as opposed to file date or file size.
- Send emails to different archive repositories, based on message metadata content.
- Store the archives onto CD, DVD, UDO or ProData WORM discs. Helps to comply with regulations calling for WORM.
- Add read-only Captaris Alchemy Windows or Web Access clients for auditors, privacy officers, compliance officers, legal, etc.
- Easy to integrate with the optional Captaris Alchemy Records Manager for lifecycle management.
- Easy to integrate with the optional Advanced Server Audit Logging feature.
- Import and index Bloomberg Mail data files into a searchable archive, with the optional DataGrabber input module.

SYSTEM REQUIREMENTS

Alchemy Server

- Standard or Advanced 8.0 or later

Server Operating System

- Windows NT Server, Windows 2000 or 2003 Server

Email Server

- Microsoft Exchange 2000 or 2003

FOR MORE INFORMATION

Captaris Business Information Delivery solutions capture, process, archive and deliver data and documents enabling customers to reduce costs and increase the performance of critical business information investments. Through its global distribution network, Captaris delivers cost-effective software products and services that help organizations manage and leverage the value of corporate information. In partnership with leading enterprise technology companies, Captaris has installed more than 90,000 systems in 95 countries in companies of all sizes, including the entire Fortune 100. For more information please contact us at www.Captaris.com/Alchemy or +1.303.689.0022.

©2004 All rights reserved. No part of this publication may be reproduced, transmitted, transcribed, stored in a retrieval system, or translated into any language in any form by any means without the written permission of Captaris. Captaris products Alchemy, Interchange, RightFax and Teamplate are trademarks of Captaris. All other company, brand and product names are the property and/or trademarks of their respective companies. MC0010170